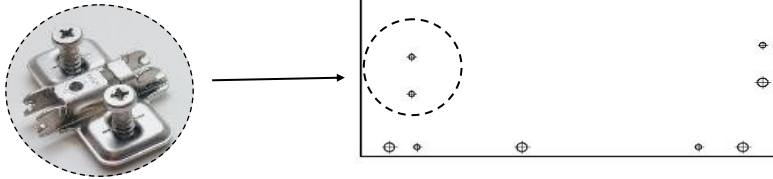


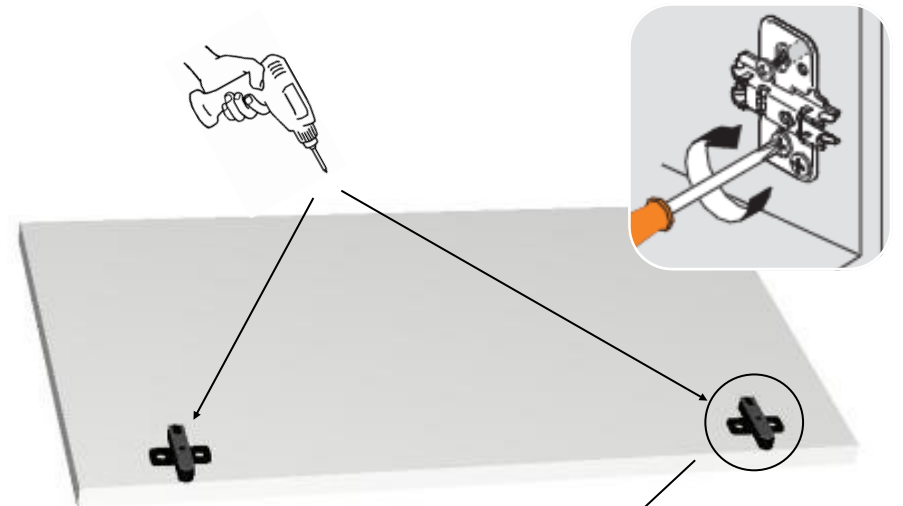
- 1 Identify the hinge gable:** look for the gable with the holes on the inside face —find the small holes for the hinge plate screws.

Identify the small screw holes for the door hinges...

Place the gable face down and open up your hardware pack . Find the two hinge plates for Step 2.

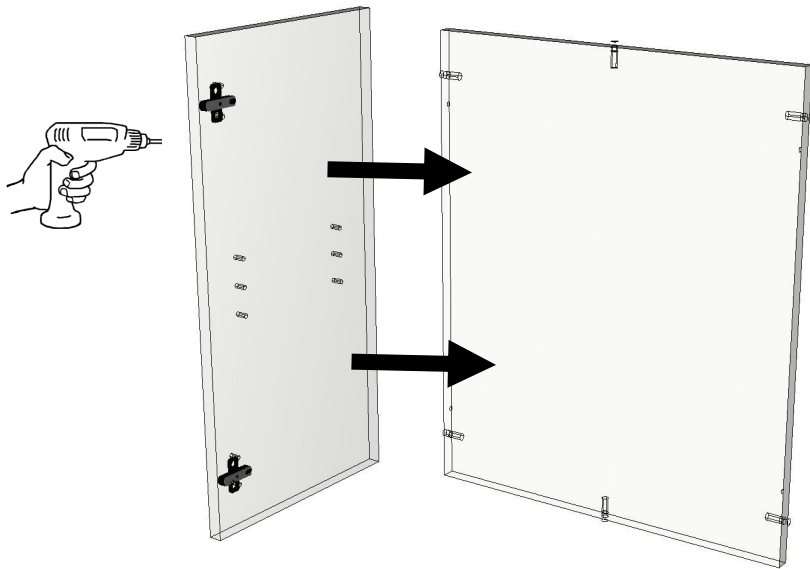


- 2 Insert the hinge plates:** the hinge plates are designed for DIY assembly and can simply be “pushed in” and finished off by screwing in tight...

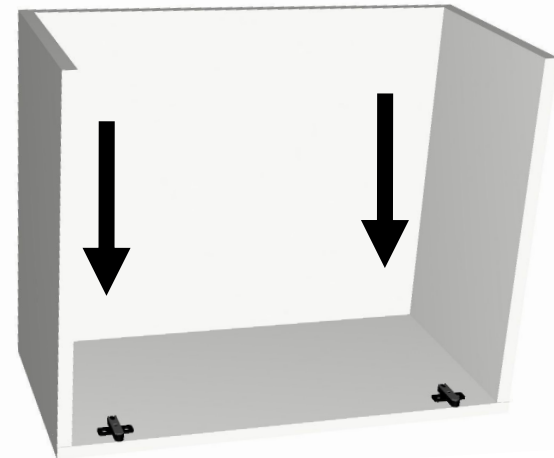


Identify the arrow on each plate and ensure these are oriented towards the front edge

- 3 Identify the back:** insert dowels into the holes—then join this back with one of the gables... Be sure to secure this join by inserting screws in the small holes from the outside

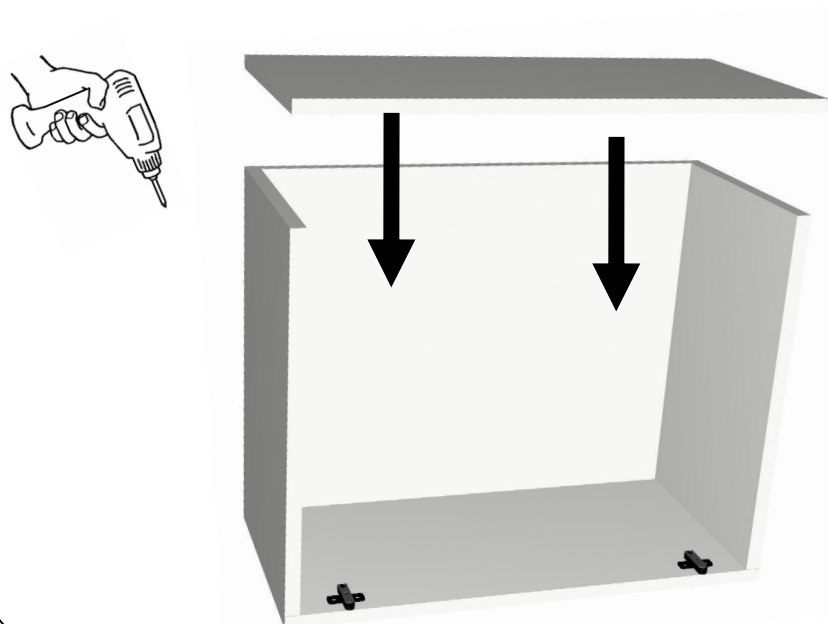


- 4 Now place carcass on end.** Insert dowels into the top & bottom ... and insert these into the gable.



The top & bottom of your carcass are dowelled into the back & the gable so ensure these are correctly located.

- 5 Almost there:** place the last gable on to the carcass ensuring the dowels are aligned. Then secure with screws in the remaining holes.



- 6 You can now clip your doors on:** ..... And check you don't have any holes leftover... (EXCEPT for your adjustable shelf holes)

